

MONTHLY MEMBERSHIP PROGRESS REPORT

LOCATION CALIFORNIA

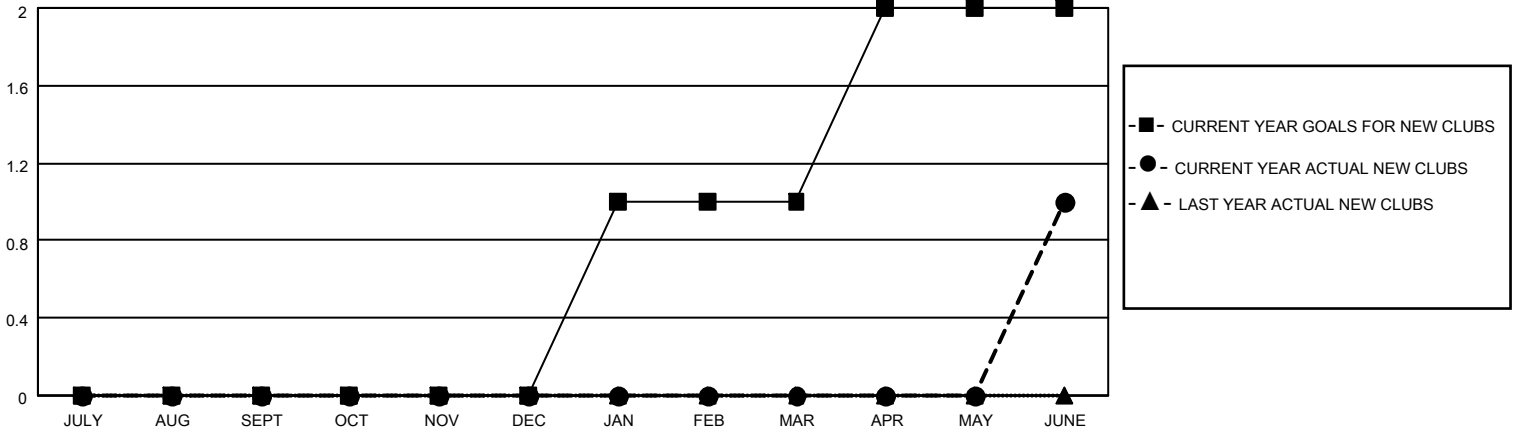
District 4 C5

Results as of: 6/30/2022

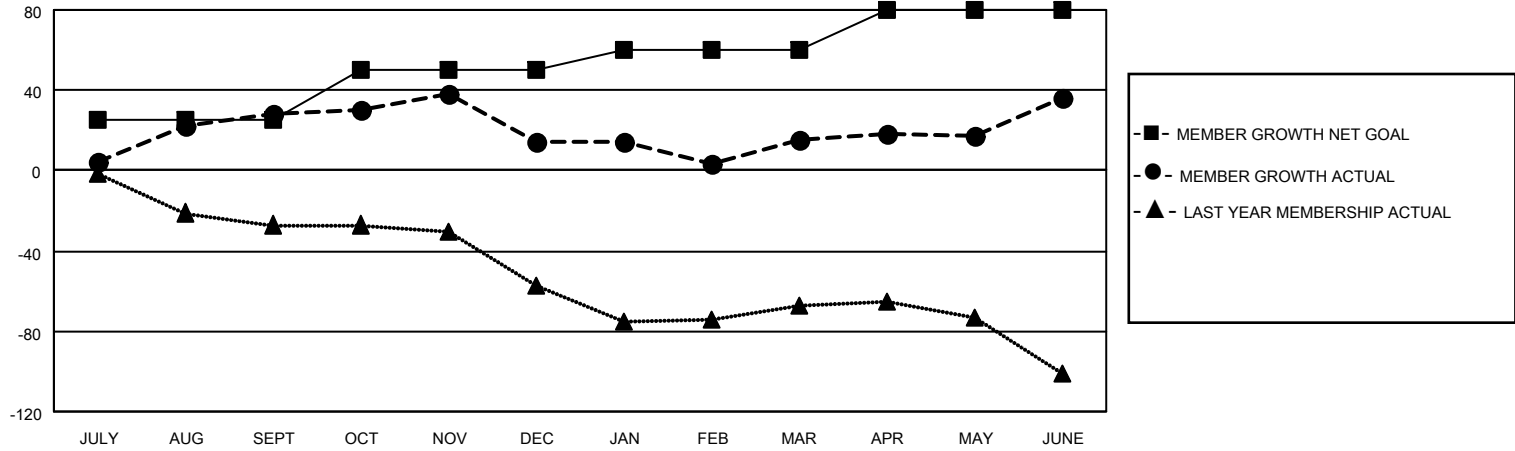
Clubs			
RESULTS FOR 2021-2022			
QUARTER	NEW CLUB GOAL	NEW CLUBS	DROPPED CLUBS
JULY/AUG/SEPT	0	0	0
OCT/NOV/DEC	0	0	0
JAN/FEB/MAR	1	0	1
APR/MAY/JUNE	1	1	0

Members			
RESULTS FOR 2021-2022			
QUARTER	MEMBER GROWTH NET GOAL	MEMBER GROWTH ACTUAL	DROPPED MEMBERS ACTUAL (including transfers)
JULY/AUG/SEPT	25	65	25
OCT/NOV/DEC	25	30	38
JAN/FEB/MAR	10	43	37
APR/MAY/JUNE	20	95	70

GOALS AND ACTUAL NEW CLUBS CUMULATIVE



GOALS AND ACTUAL MEMBERS CUMULATIVE



DROPPED CLUBS: 1	
DROPPED MEMBERS	
DECEASED	23
CLUB CANCELLED	0
OTHER	147
TOTAL	170

43 CLUBS OF 51 ADDED 1 OR MORE NEW MEMBERS

[CLICK HERE FOR CUMULATIVE MEMBERSHIP DATA](#)

<u>GENDER DISTRIBUTION</u>	
MALE	702 (53.26%)
FEMALE	616 (46.74%)
NON BINARY	0 (0.00%)
PREFER NOT TO ANSWER	0 (0.00%)
TOTAL FAMILY UNIT MEMBERS	322
FAMILY MEMBERS PAYING HALF DUES	166